



IMMR Accelerating *your* innovative research



PRECLINICAL RESEARCH  
SURGICAL TRAINING  
GLP STUDIES  
HISTOPATHOLOGY

**IMMR** is one of the world's leading preclinical laboratories, strategically located in one of Paris's most modern hospitals.

## IMMR

IMMR (previously IMM Recherche) is a Contract Research Organization specialized in preclinical surgical research.

With years of experience and a cutting-edge surgical and housing facility, we are the laboratory of choice for your in vivo medical device testing.

Our main focus is on early research and development studies, Good Laboratory Practice compliant studies, surgical training, histopathology of explanted soft and hard tissue.

We can service your projects from the early phases of technical feasibility all the way to the final report with histopathology, requested for your regulatory submission to notified bodies.



## OUR TEAM

IMMR is one of the leading European preclinical laboratories, strategically located in one of Paris's most modern hospitals. Our team of 30+ medical research professionals operates under the supervision of two veterinary surgeon experts (Dr Nicolas Borenstein and Dr Luc Behr) and a world class surgeon (Pr. François Laborde)

François Laborde, MD  
Chairman of the board



Dr Luc Behr, DVM, PhD  
Scientific and Technical Director

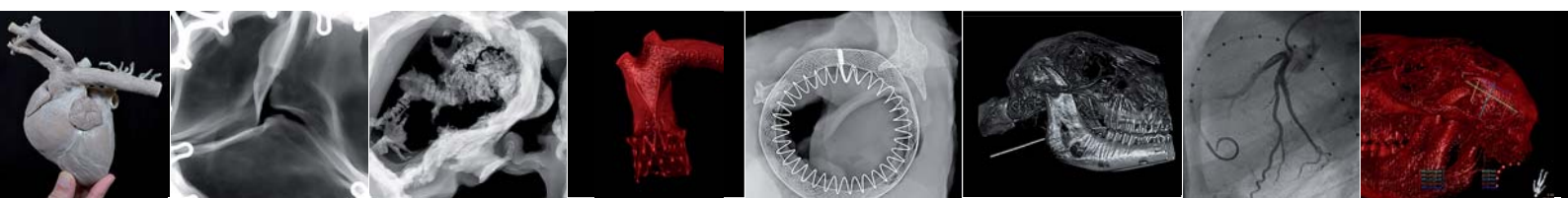


Dr Nicolas Borenstein, DVM, PhD  
Scientific and Technical Director



We are a team of professionals, dedicated to the success of our customers' projects, with more than 25 years of experience in surgery and research. We have validated procedures, cutting-edge equipment and state of the art surgical suites.

Our level of commitment to high end professional standard can be illustrated by our quality assurance approach. Quality assurance has become of paramount importance in our daily life at IMMR. Surgery is a craft, and we are indeed experts in this field. But our customers are buying a lot more than our technical know-how in the operating room: they are buying data. Generating data requires constant scrutiny, verification, validation, interpretation, and archiving. A robust quality assurance system is therefore necessary. We follow the methods of Good Laboratory Practice to assure the highest professional standards in the field of large animal surgery and medical devices. Of note, we have **successfully fulfilled a GLP audit from the FDA.**







## OUR KNOW HOW

EARLY R&D STUDIES

GOOD LABORATORY PRACTICE STUDIES (GLP)

SURGICAL PHYSICIAN TRAINING

COMPLETE PATHOLOGY SERVICES

With more than 25 years of experience in large animal surgical research, interventional radiology, validated procedures, manipulating cutting-edge equipment and state of the art surgical suites, we have developed a strong know-how in various fields:

CARDIO-THORACIC AND  
VASCULAR RESEARCH

OPHTHALMOLOGY



ORTHOPEDIC SURGERY

NEURO-SURGERY, DENTISTRY,  
UROLOGY, FETAL SURGERY,  
ROBOTICS, ETC.

IMMR offers a state-of-the-art medical device pathology service and follow the methods of Good Laboratory Practice to assure the highest professional standards. Our team will strive to service your study and bring your medical device to market in a timely and cost effective manner.

### OUR INDEPENDENCE AND CONFIDENTIALITY

Independence and clients' confidentiality have been IMMR's core principles since its creation.

A Shareholders structure composed of French insurance companies with no link with medical research organizations to offer a total absence of conflict of interest

Secure and modern laboratories located in one of Paris's largest hospitals

Structural Organization carefully designed and implemented to avoid any data leakage and protect clients' confidentiality

Autonomous and independent management of a high-end farm nearby Paris securing the supply and quality of animals

### Our technical platform

Hybrid procedures are very much a recent concept in the cardiovascular arena.

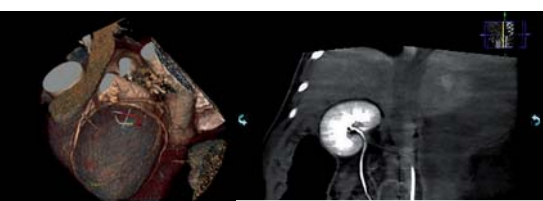
The first hybrid percutaneous coronary angioplasties were performed along a conventional cardiac surgery in the 1990's. But the idea flourished in the early 2000's when transcatheter Aortic Valve Implantation (TAVI) became one of the hottest fields in interventional cardiology (which we largely contributed to validate). This is where **our hybrid operating rooms (OR)** come naturally as a wonderful research piece of equipment. But there are other medical specialties where these hybrid ORs can be an insightful adjunct. Most and foremost, vascular surgery, interventional radiology, orthopedics and neurology.

These rooms are simply some of the best a preclinical research lab could have and very few of us have such a high-end tool to explore and validate medical devices in clinically relevant animal models.

We have also invested recently in **2 intracardiac ultrasound machines** and a **CT scan modality**.

We encourage you to come and try the adventure and benefit from all the new modalities we have.

- 5 OPERATING ROOMS
- 2 STATE-OF-THE-ART HYBRID ROOMS
- 2 MOBILE C-ARMS
- PHILIPS XMATRIX 3D ULTRASOUND
- SAINT JUDE INTRACARDIAC ECHO
- CARDIOPULMONARY BYPASS
- CT CAPABILITIES WITH 3D
- VIDEOSCOPIC COLUMNS
- DIGESTIVE AND RESPIRATORY ENDOSCOPIC TOWERS
- OPERATING MICROSCOPE
- FAXITRON MX-20
- EXAKT DIAMOND BAND SAW
- CELL CULTURE ROOM
- HEMODYNAMIC DATA MONITORING
- LARGE HOUSING FACILITY, 35 KM OUTSIDE PARIS



## IMMR CONTACTS



42, boulevard Jourdan 75014 Paris - France

**T** +33 (0)1 56 61 68 21 | **F** +33 (0)1 56 61 67 40 | [www.imm-research.com](http://www.imm-research.com)

**@** [nicolas.borenstein@imm.fr](mailto:nicolas.borenstein@imm.fr) | [luc@imm.fr](mailto:luc@imm.fr) | [marie-pierre.duvivier@imm.fr](mailto:marie-pierre.duvivier@imm.fr)

### OUR PARTNERS AROUND THE WORLD



### A word from our pathologist, Dr Laurence Fiette



**LAURENCE FIETTE, DVM,  
DESAPV, PHD, HDR.**

Head of Pathology of IMMR

**@** [laurence.fiette@imm.fr](mailto:laurence.fiette@imm.fr)

Phone # 01 56 61 65 94

IMMR is committed to being a world leader, science driven center of expertise in preclinical testing of medical devices and research projects. As part of the assessment of the safety, performance and efficacy of a new biomaterial or device, the Pathology Department of IMMR offers an integrated, comprehensive, state of the art and GLP compliant portfolio that includes samples processing, evaluation, interpretation and reporting.

Pathology is the gold standard for the evaluation of device performance and safety in preclinical models and has a central position in the regulatory guidance documents (ISO 10993, ASTM International, EMEA guidelines and FDA recommendations). Macroscopic and microscopic evaluation performed in a carefully selected animal model provides critical information regarding biological responses to a medical device or biomaterial.

At IMMR, we strive for excellence and quality in all our customer-oriented services. We offer both histology services and expert macroscopic as well as microscopic evaluation. We aim to deliver preclinical and research data in a timely and cost-effective manner.